



## Astra Court West Hornchurch

£1,450 PCM

APS have pleasure in offering this spacious 2 bedroom part furnished first floor flat which is located within walking distance of Elm Park station. The property boasts a fitted kitchen with appliances, contemporary bathroom suite with shower over bath and two bedrooms. Other benefits include double glazed windows and neutral decor throughout. Available 29th May 2026. Council Tax Band B.

- FITTED KITCHEN WITH APPLIANCES
- SPACIOUS 2 BEDROOM FLAT
- DOUBLE GLAZING
- CLOSE TO STATION

### Viewing

Please contact our Alternative Property Services Limited Office on 01708 454121 if you wish to arrange a viewing appointment for this property or require further information.

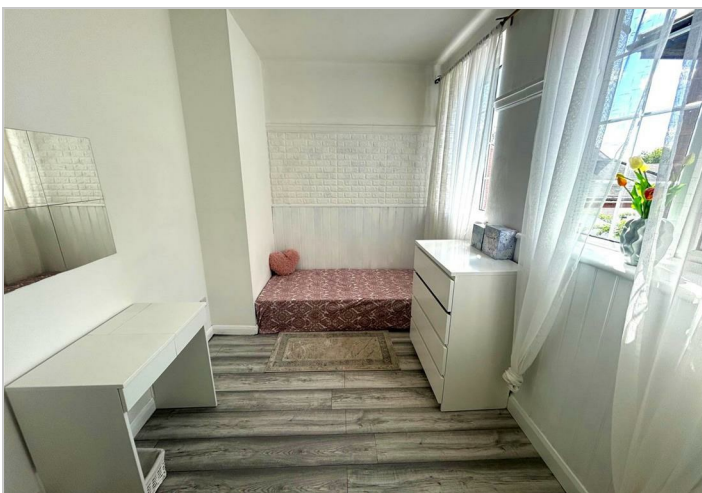
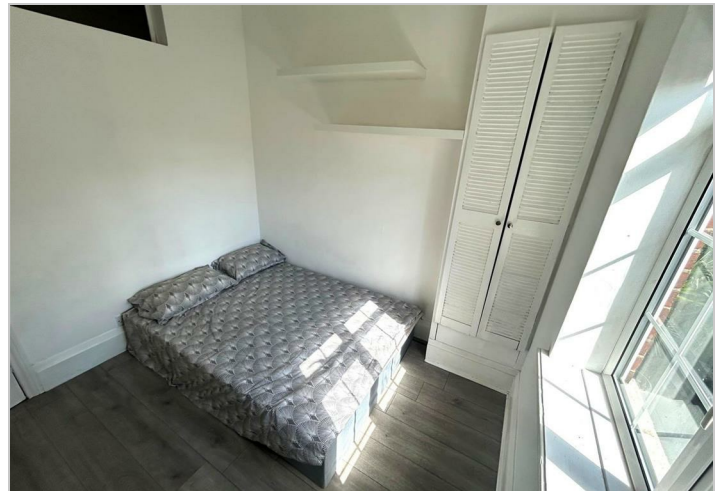
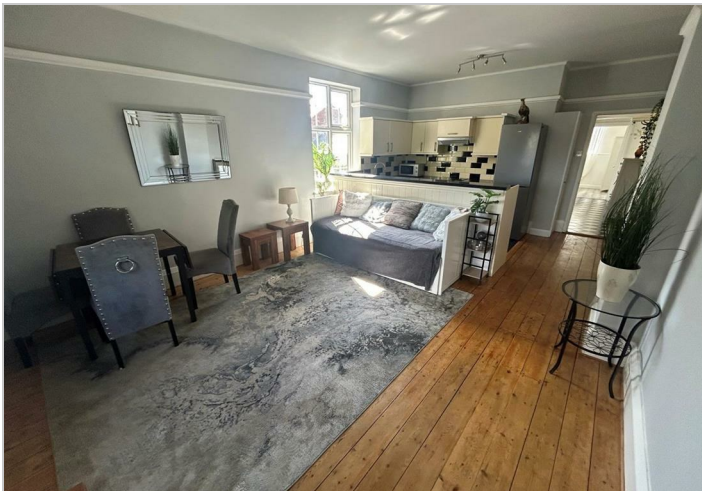
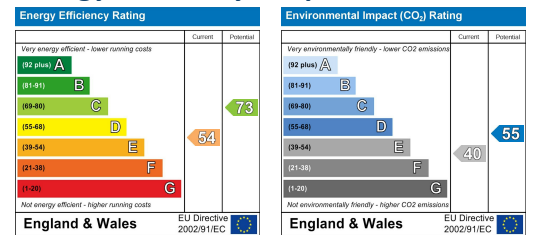




## Area Map



## Energy Efficiency Graph



These particulars, whilst believed to be accurate are set out as a general outline only for guidance and do not constitute any part of an offer or contract. Intending purchasers should not rely on them as statements of representation of fact, but must satisfy themselves by inspection or otherwise as to their accuracy. No person in this firm's employment has the authority to make or give any representation or warranty in respect of the property.

4 North Street, Hornchurch, Essex, RM11 1QX

Tel: 01708 454121 Email: [lettings@alternativepropertyervices.co.uk](mailto:lettings@alternativepropertyervices.co.uk) <https://www.alternativepropertyervices.co.uk>